

## PHOENIX™ Software For Advanced Management

Phoenix™ SQL, Phoenix™ Premier and Phoenix™ Plus are powerful fuel management software packages for your C/OPT™, K800™, K800™ Hybrid, FIT500™ and PetroLink™ Fuel Management Systems and your Windows®-compatible PC. The intuitive user interface lets you easily navigate between site, account, card and transaction screens.

The new **Phoenix™ SQL** offers complete site reconciliation on a browser-based system operating over a server and the content is delivered to users via their browser. Phoenix™ SQL is also designed to poll multiple TCP/IP based fuel control systems and tank gauges simultaneously, dramatically reducing data collection times for multiple fuel sites.

**Phoenix™ Premier** offers complete site reconciliation by incorporating additional site data from your OPW tank gauge or other brand of tank gauge.

Most data can be exported to a third-party database, spreadsheet and fleet maintenance programs for further processing.

**Phoenix™ Plus** is a powerful data management and communications software package that gives you total, centralized control over your fueling operations, featuring back-up and restore, terminal emulation and on-demand or automatic transaction polling, plus reporting capability.

## Phoenix™ Components

A K800™, K800™ Hybrid, C/OPT™, FIT500™ or PetroLink™ Fuel Control System

A Windows® PC with 1.5 GHz or higher processor speed running Windows XP®, 2003 Server, Vista and Windows® 7, 1 GB RAM, CD-ROM drive, 250 MB hard disk space and a 800 x 600 display



## Phoenix™ SQL Features

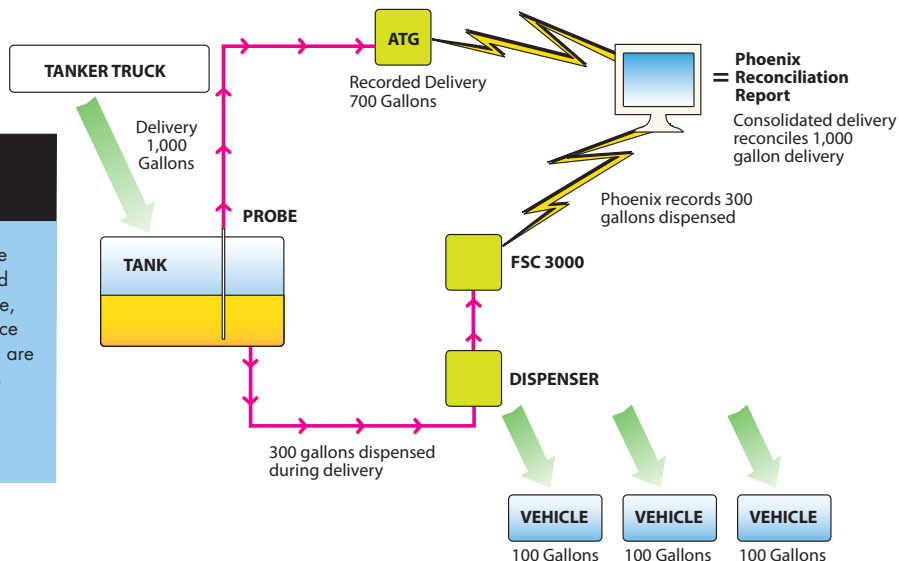
- ◆ Browser enabled; supported browsers include Internet Explorer 7 & 8, Mozilla Firefox 3.5 & 3.6
- ◆ Server based and SQL enabled
- ◆ Provides simultaneous multi-user access
- ◆ Centralized card database for multiple sites
- ◆ Provides communications through modem, Ethernet or direct connection
- ◆ Compatible with Windows® XP, Vista and Windows® 7 (32/64-bit); Windows Server 2003 (32/64-bit) and 2008 R2 (64-bit)
- ◆ Export transactions in Excel, CSV and XML
- ◆ Multi-level access and security features
- ◆ Allows for the creation of "Fuel Zones" to limit where fleet cards can fuel

## Phoenix™ Premier Features

- ◆ Polls Petro Vend FSC3000™/System2™ for site, account, card, and transaction data, and OPW tank gauges (or other brands of automatic tank gauges) for real-time fuel inventory information for reconciling a site's fueling activities
- ◆ Ideal for owners of multiple fuel sites who want to integrate the management of their facilities into one centralized computer
- ◆ Based on Phoenix™ Plus software package, and includes full-featured back-up and restore, automatic and on-demand transaction polling, card management, and over 60 reports
- ◆ Runs on a Windows® PC – compatible with Windows XP® or Windows Vista®
- ◆ Provides communication through modem, Ethernet, or direct connection
- ◆ Eliminates the need for 2 separate lines and modems when polling via phone lines
- ◆ Automatic and on-demand transaction polling enhances ease of reporting reconciliation information
- ◆ Centralized card database for multiple sites (FSC3000™, System2™ version only)

# OPW Phoenix™ SQL Reconciliation Report

OPW Phoenix™ SQL Fuel Management Software has the ability to account for any fuel dispensed while a fuel delivery is in progress. For example, if a fuel delivery of 1,000 gallons is taking place and Phoenix™ SQL software senses 300 gallons are simultaneously being dispensed, Phoenix SQL's Reconciliation Report will account for this sale and clearly show the calculated fuel delivery was, in fact, 1,000 gallons.

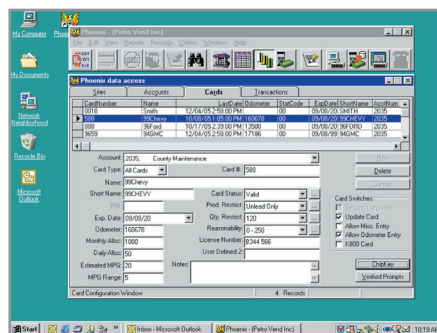


## Phoenix™ Premier Features Continued

- ◆ Facilitates daily inventory management
- ◆ Stores records in your back-office PC environment for easy retrieval and management
- ◆ Reduces training costs – Windows®-based program is easy to learn, easy to use

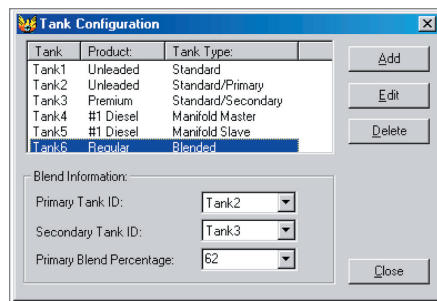
## Phoenix™ Plus Features

- ◆ Centralized control over your fueling operations, featuring back-up and restore, terminal emulation and on-demand or automatic transaction polling
- ◆ Reporting feature lets you report on multiple sites at one time and schedule the printing of reports and export data. Reporting capability also includes any network transactions that are found in Fuel Site Controller software versions like VisaNet and Multi-Trucking.
- ◆ Phoenix allows you to choose from over 60 different reports
- ◆ Enhanced Odometer Checking reveals obvious, incorrect mileage entries such as single, sequential or repeated numbers
- ◆ Compatible with Windows XP® and Vista®



Activity Detail Report by Single Cards  
Date Range From: 05/05/05 00:00:00 To: 05/05/05 23:59:59

Date	Time	Transit	Site	Account	Card Brand Name	Prod	Range	MPS	Dist	Max Fuel/4	Price	Qty	Amount
5/5/05	15:15	0000	003	2524	Standard	Card	01-1	14.8	0402	224	1129	11.200	1253.28
5/5/05	15:16	0000	003	2524	Standard	Card	01-1	14.1	0402	191	1129	11.200	1132.84
5/5/05	15:16	0000	003	2524	Standard	Card	01-1	14.9	0402	224	1129	11.200	1248.40
5/5/05	15:17	0000	003	2524	Standard	Card	01-1	15.2	0402	228	1129	11.200	1262.16
Total: 4 Sites, 4 Card #s, 8.08 MPS, 414 Miles @ 14.8 MPS, Avg MPS: 14.8, Avg Price: \$12.58, \$512.68													
5/5/05	15:15	0000	003	3333	Highway	Unit	01-1	25.4	10424	220	1030	11.200	1142.16
5/5/05	15:16	0000	003	3333	Highway	Unit	01-1	25.8	10424	220	1030	11.200	1156.96
5/5/05	15:16	0000	003	3333	Highway	Unit	01-1	25.1	10424	220	1030	11.200	1140.32
5/5/05	15:17	0000	003	3333	Highway	Unit	01-1	25.2	10424	220	1030	11.200	1145.12
5/5/05	15:17	0000	003	3333	Highway	Unit	01-1	25.4	10424	220	1030	11.200	1150.96
5/5/05	15:17	0000	003	3333	Highway	Unit	01-1	25.2	10424	220	1030	11.200	1145.92
5/5/05	15:17	0000	003	3333	Highway	Unit	01-1	25.1	10424	220	1030	11.200	1140.32
5/5/05	15:17	0000	003	3333	Highway	Unit	01-1	25.2	10424	220	1030	11.200	1145.92
5/5/05	15:17	0000	003	3333	Highway	Unit	01-1	25.4	10424	220	1030	11.200	1150.96
5/5/05	15:17	0000	003	3333	Highway	Unit	01-1	25.2	10424	220	1030	11.200	1145.92
Total: 6 Sites, 6 Card #s, 10.8 MPS, 144 Miles @ 14.8 MPS, Avg MPS: 14.8, Avg Price: \$12.58, \$512.68													
5/5/05	15:16	0000	003	3333	Charter/Bus	Card	01-1	0.0	0	0	1100	4.00	4400.00
5/5/05	15:17	0000	003	3333	Charter/Bus	Card	01-1	0.0	0	0	1100	4.00	4400.00
5/5/05	15:18	0000	003	3333	Charter/Bus	Card	01-1	0.0	0	0	1100	4.00	4400.00
5/5/05	15:19	0000	003	3333	Charter/Bus	Card	01-1	0.0	0	0	1100	4.00	4400.00
Total: 4 Sites, 4 Card #s, 0.0 MPS, 0 Miles @ 0.0 MPS, Avg MPS: 0.0, Avg Price: \$12.58, \$0.00													



**NOTE:** See OPW Fuel Management Systems' Website at [www.opwglobal.com](http://www.opwglobal.com) for detailed product literature, manuals and sales representative contact information for your area.

